

# 19/01622/FUL

Car Park Land Adjacent Clive Works, Edward Street

Erection of two three-storey buildings to provide 19no. one bed apartments for affordable rent and 90 sq. m. of office space for use by Accord Group

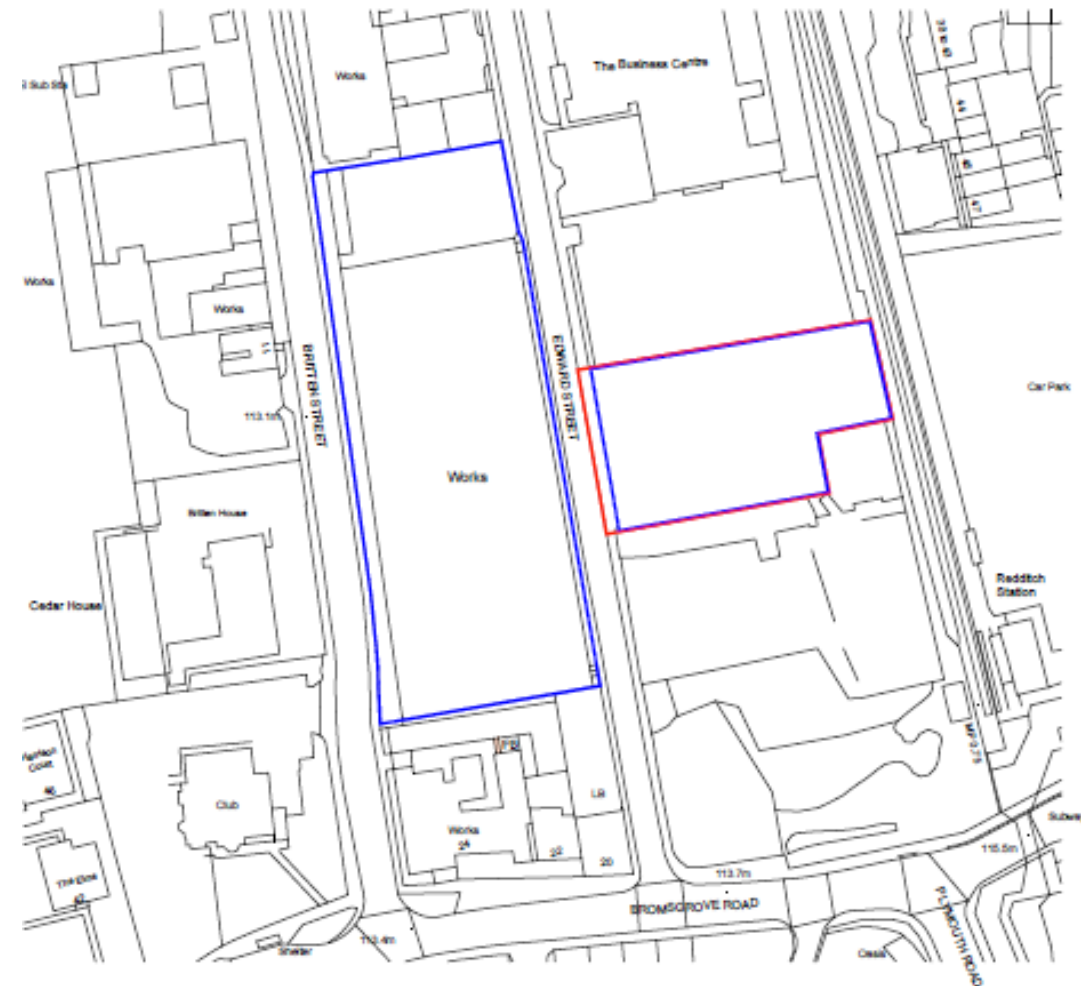
Recommendation: Delegate to Head of Service to grant subject to completion of S106 agreement and conditions

## Site Location



— Site Boundary Line

— Land Owned By The Applicant



```

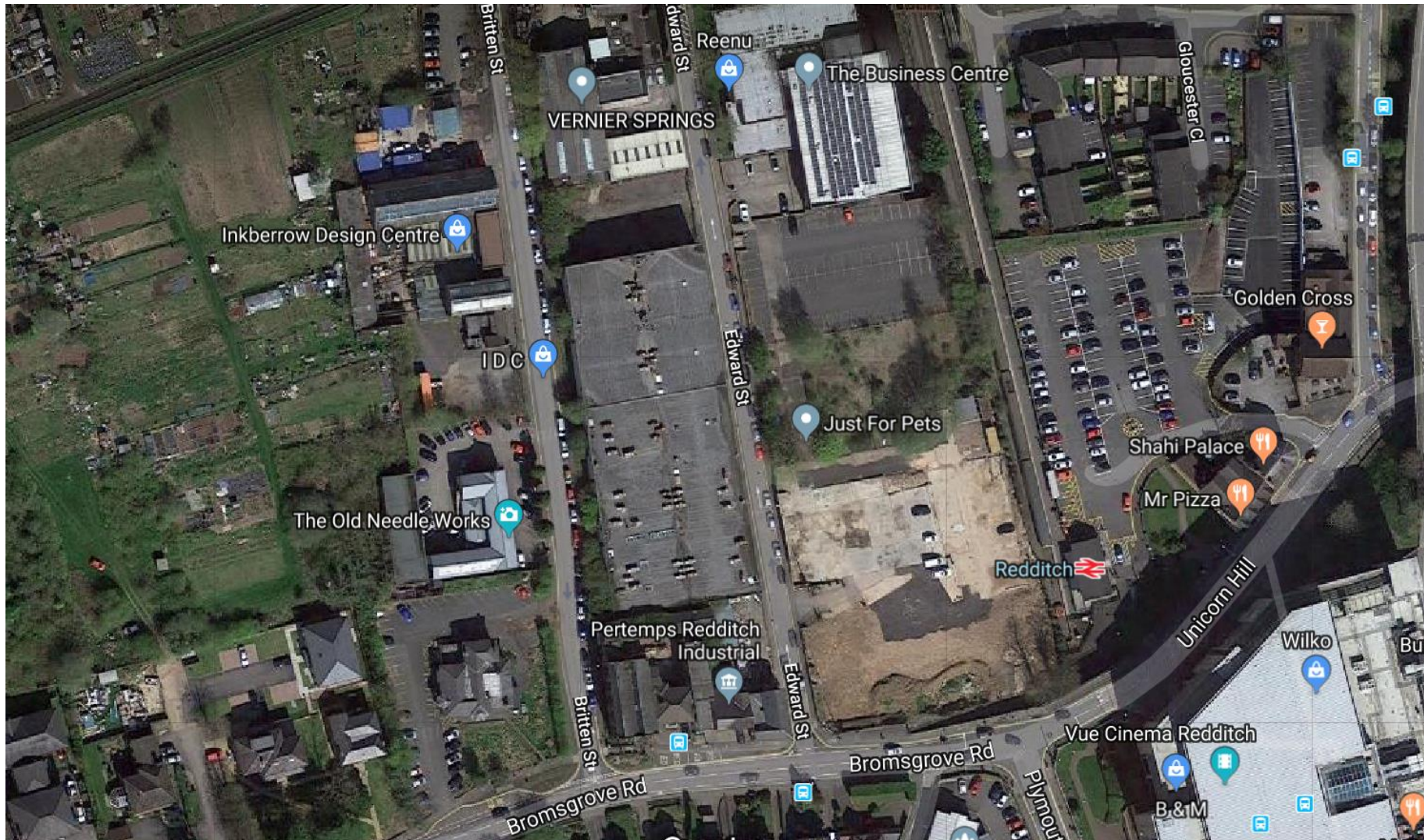
| new | note |

```

indesign.

part of the  
**accord**  
group

# Satellite View

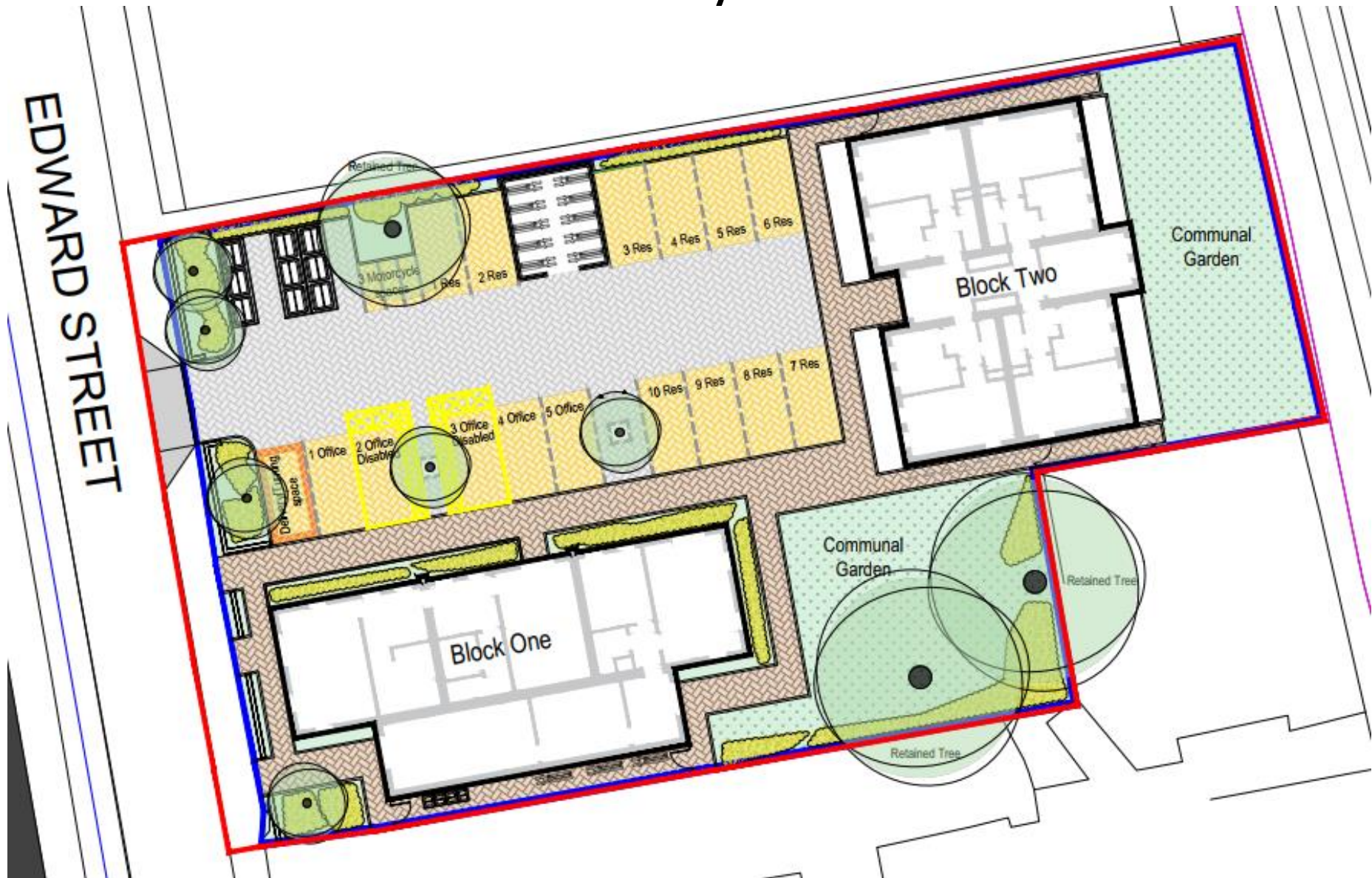




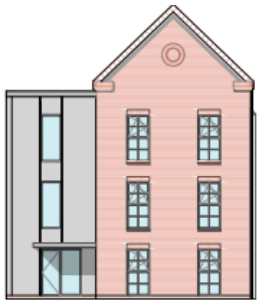
# View from Bromsgrove Road



# Site layout



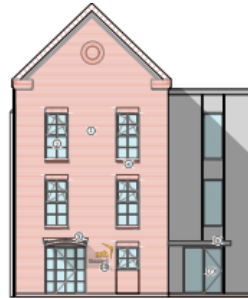
# Building 1 plans and elevations



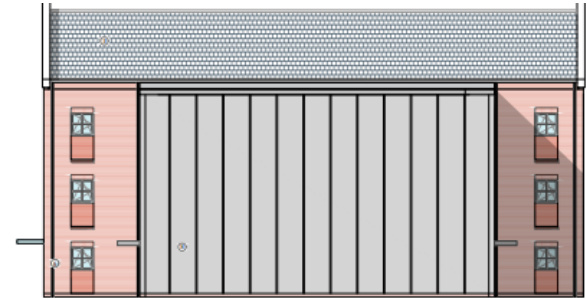
Eastern elevation



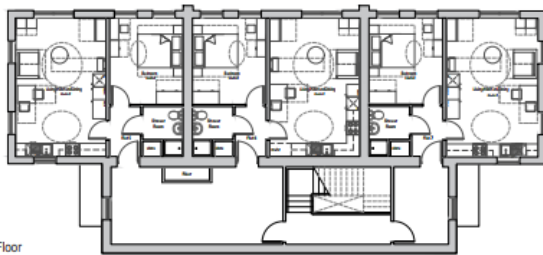
Northern elevation



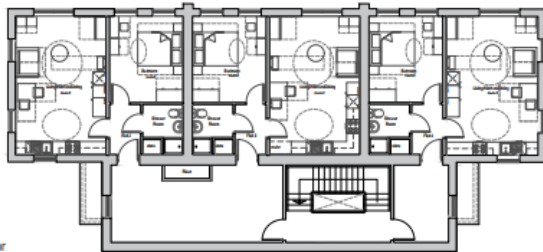
Edward Street / western elevation



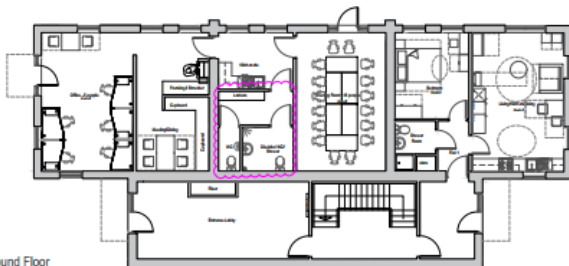
Southern elevation



Second Floor



First Floor



Ground Floor

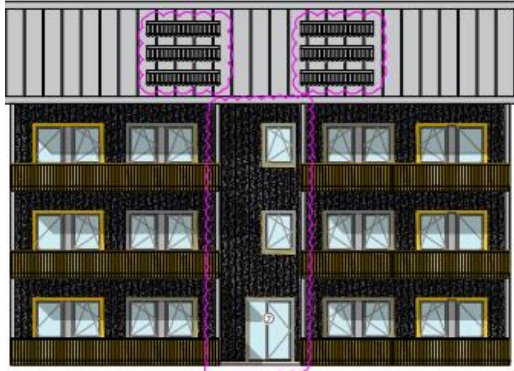
## Material Schedule:

- ① Facing brick: Brick Spec TBC • Stretcher bond • Red Colour
- ② Windows: Material & Spec TBC • Dark Grey Colour
- ③ Roof tiles: Thin Leading Edge Concrete Interlocking Tile • Colour TBC
- ④ Window Sills: Brick Spec TBC • Cant brick on edge • Red Colour
- ⑤ Office Entrance Door Canopy: Stainless Steel Hung Glass Canopy
- ⑥ Rainwater Goods: Material TBC • Colour TBC
- ⑦ Entrance Doors: Material TBC • Colour TBC
- ⑧ Rainscreen Cladding: High Pressure Laminate • Colour TBC
- ⑨ Entrance Door Canopy: PPC Aluminium • Colour TBC
- ⑩ Office Signage

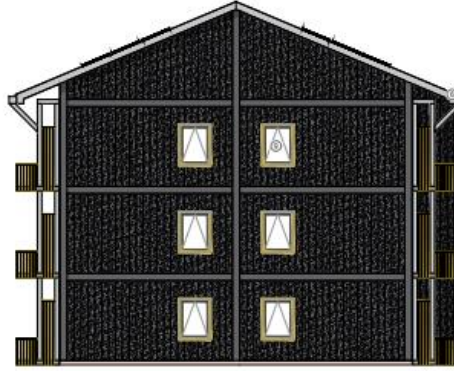




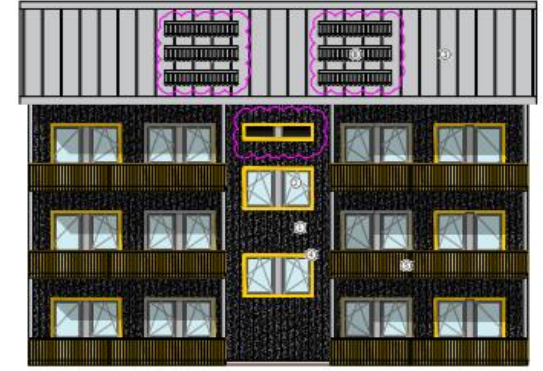
# Building 2 plans and elevations



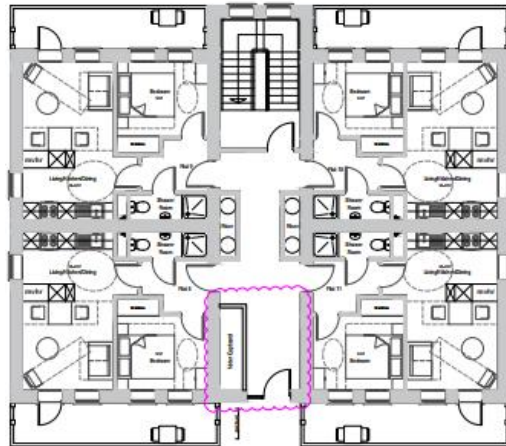
Front elevation to Edward Street



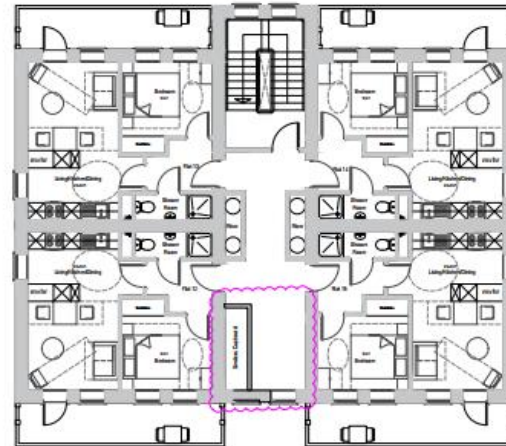
Side elevations



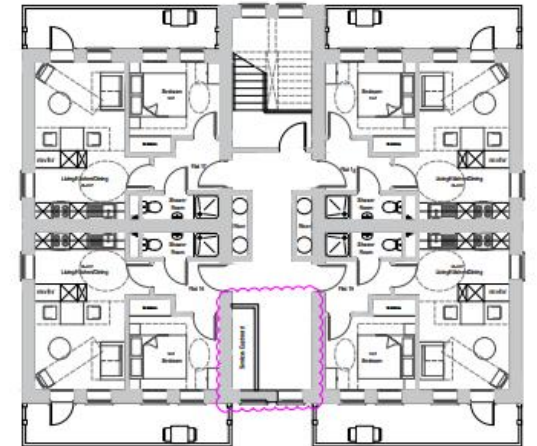
Rear elevation to Redditch Train Station



Ground floor



First floor



Second floor





indesign.  
part of the  
accord  
group



# Building 2 visual



# Visual from Edward Street





# Visual from East





# Visual from Edward Street





# Visual from Building B



# Aerial 19/01600 and 19/01622





# Aerial 19/01600 and 19/01622

